

チム・チム・チェリー

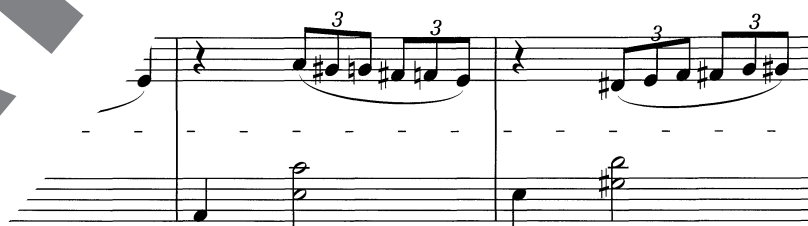
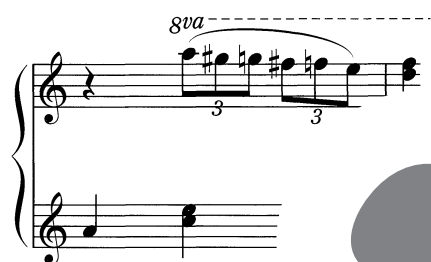
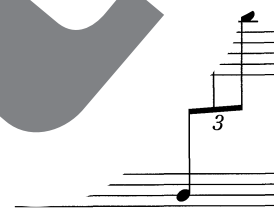
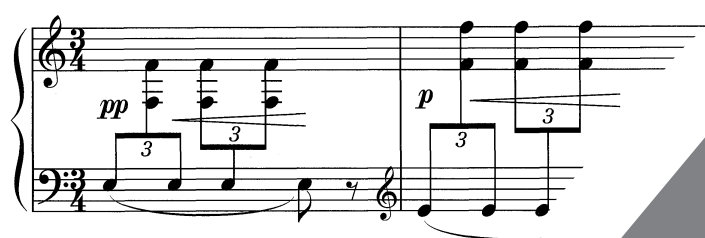
「メリー・ポピンズ」より

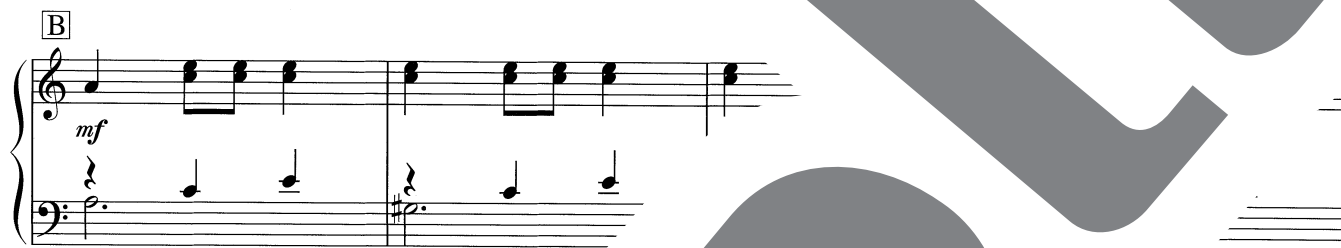
作 曲 : Richard M. Sherman
/ R. B. Sherman

(Original Key : Cm)

Tempo di valse (♩ = 52)

8va





D

mf

3 2 1 3 2 1

E *8va*

f

3

8va

3 3

5 1 4 3 1 3

F (*gva*)

mp

G

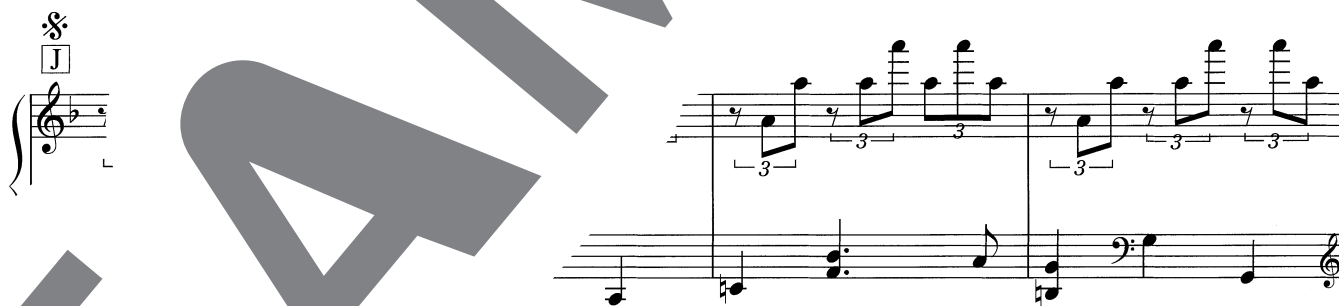
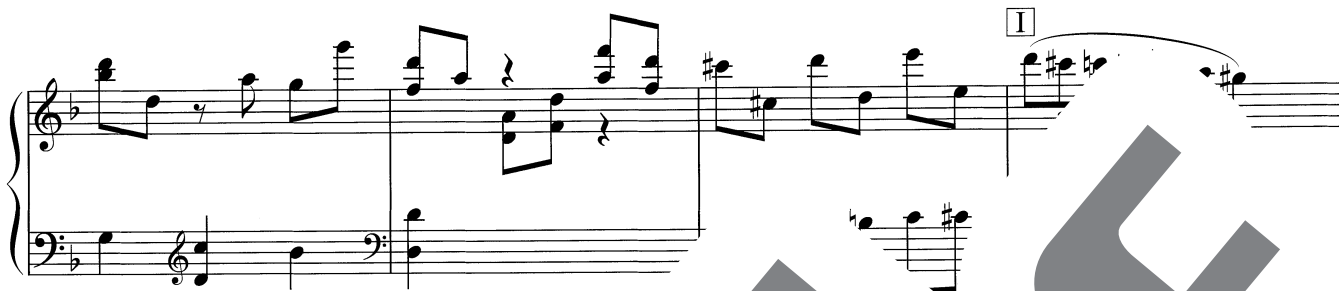
mp

f

H

f

f



K *8va* to C_4

This system shows the beginning of a piece in G major (one sharp). The treble staff contains a melodic line with triplets of eighth notes, marked *8va*. The bass staff provides harmonic support with chords and single notes. A key signature change to C major is indicated at the end of the system.

(8va)

The second system continues the melodic line in the treble staff with triplets, marked *(8va)*. The bass staff continues with harmonic accompaniment.

The third system features a change in the bass line, with a triplet of eighth notes in the treble staff and a more active bass line.

The fourth system introduces a more complex melodic line in the treble staff, featuring multiple triplets. The bass staff continues with harmonic support.

The fifth system concludes the piece with a final cadence. The treble staff features a melodic line with triplets, and the bass staff provides a solid harmonic foundation.